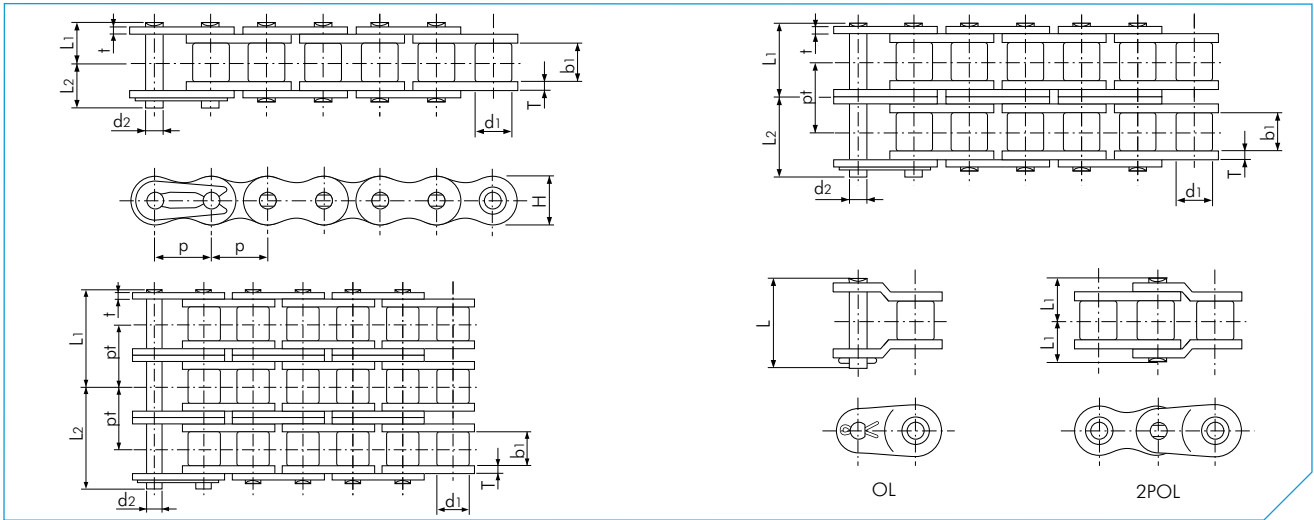


BS RUNNER STANDARD ROLLER CHAIN



BS Runner

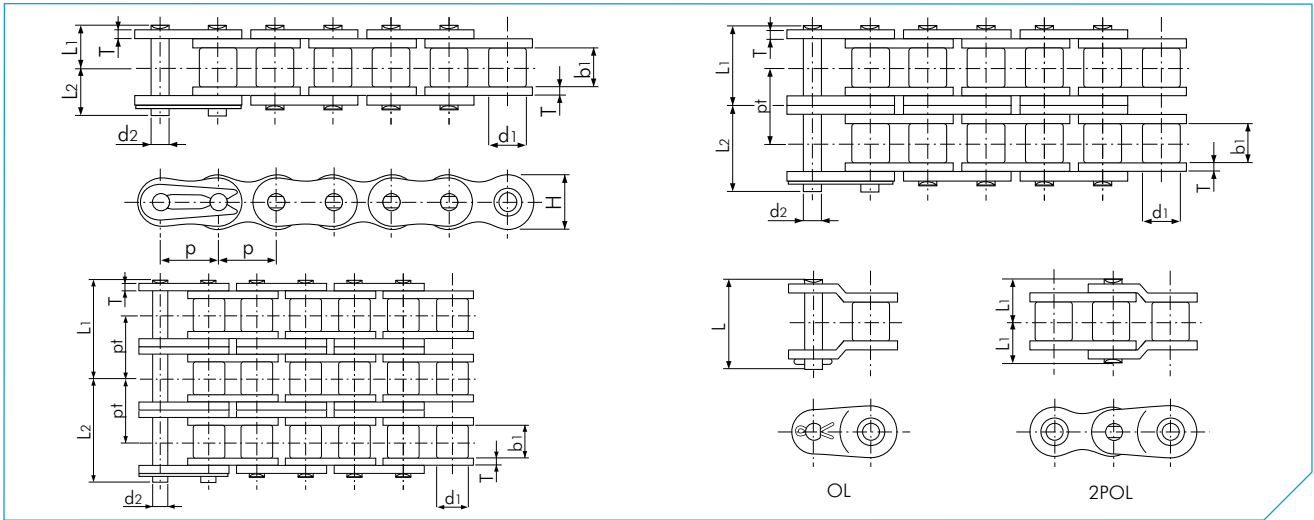
Dimensions in mm

TSUBAKI Chain No.	Pitch p	Roller Diameter d1	Inner Width b1	Pin			Link Plate			Transverse Pitch pt	Min. Tensile Strength acc. to ISO 606 kN	Min. Tensile Strength acc. to Tsubaki kN	Av. Tensile Strength acc. to Tsubaki kN	Approx. Mass kg/m			
				Diameter d2	Length L1	Length L2	Length L	Thickness T	Thickness t						Height H (max)		
RS05B-1	8.00 (0.315")	5.00	3.00	2.30	3.80	4.70	-	0.75	0.75	7.10	-	4.4	5.0	5.8	0.18		
RS05B-2					6.65	7.52	-				5.64	7.8	7.8	8.9	0.35		
RS05B-3					9.45	10.34	-				5.64	11.1	11.2	12.8	0.53		
RF06B-1	9.525 (3/8")	6.35	5.72	3.27	6.10	7.70	14.20	1.30	1.00	8.20	-	8.9	9.0	9.9	0.39		
RF06B-2					11.43	12.57	-				10.24	16.9	17.0	18.7	0.75		
RF06B-3					16.90	17.50	-				10.24	24.9	24.9	27.4	1.11		
RS08B-1	12.70 (1/2")	8.51	7.75	4.45	8.40	10.00	18.40	1.60	1.60	12.00	-	17.8	19.0	20.9	0.70		
RS08B-2					15.30	16.90	33.60				13.92	31.1	32.0	35.2	1.35		
RS08B-3					22.25	23.85	47.60				13.92	44.5	47.5	52.3	2.00		
RS10B-1	15.875 (5/8")	10.16	9.65	5.08	9.55	11.25	21.10	1.50	1.50	14.70	-	22.2	23.0	25.3	0.95		
RS10B-2					17.85	19.55	39.40				16.59	44.5	44.5	49.0	1.85		
RS10B-3					26.15	27.85	56.10				16.59	66.6	66.8	73.5	2.80		
RS12B-1	19.05 (3/4")	12.07	11.68	5.72	11.10	13.00	24.80	1.80	1.80	16.10	-	28.9	31.0	34.1	1.25		
RS12B-2					20.85	22.75	46.30				19.46	57.8	61.0	67.1	2.50		
RS12B-3					30.60	32.50	66.00				19.46	86.7	92.0	101.0	3.80		
RS16B-1	25.40 (1")	15.88	17.02	8.28	17.75	19.95	38.90	4.00	3.20	21.00	-	60.0	70.0	77.0	2.70		
RS16B-2					33.55	35.75	73.80				31.88	106.0	128.0	141.0	5.40		
RS16B-3					49.50	51.70	105.90				31.88	160.0	192.0	211.0	8.00		
RS20B-1	31.75 (1 1/4")	19.05	19.56	10.19	19.90	23.10	46.95	4.40	3.40	26.00	-	95.0	98.1	108.0	3.85		
RS20B-2					38.25	41.45	84.85				36.45	170.0	197.0	217.0	7.65		
RS20B-3					56.50	59.70	121.35				36.45	250.0	295.0	325.0	11.45		
RS24B-1	38.10 (1 1/2")	25.40	25.40	14.63	26.65	31.85	62.00	6.00	5.60	33.40	-	160.0	167.0	184.0	7.45		
RS24B-H-1					29.30	34.20	-				7.50	6.00	36.20	-	234.0	270.0	8.20
RS24B-2					50.80	56.00	112.95				48.36	280.0	335.0	369.0	14.65		
RS24B-3	75.10	80.20	161.35	48.36	425.0	500.0	550.0	21.75									
RS28B-1	44.45 (1 3/4")	27.94	30.99	15.90	32.45	37.45	74.50	7.50	6.30	36.40	-	200.0	200.0	220.0	9.45		
RS28B-2					62.15	67.15	136.85				59.56	360.0	374.0	411.0	18.80		
RS28B-3					91.95	96.95	196.45				59.56	530.0	560.0	616.0	28.20		
RS32B-1	50.80 (2")	29.21	30.99	17.81	32.10	37.70	73.50	7.00	6.30	42.20	-	250.0	255.0	281.0	10.25		
RS32B-2					61.25	66.85	135.25				58.55	450.0	485.0	534.0	21.10		
RS32B-3					90.50	96.10	193.80				58.55	670.0	729.0	802.0	29.90		
RS40B-1	63.50 (2 1/2")	39.37	38.10	22.89	39.25	45.05	88.85	8.50	8.00	52.90	-	355.0	373.0	410.0	16.35		
RS40B-2					75.40	81.20	163.55				72.29	630.0	716.0	788.0	32.00		
RS40B-3					111.50	117.30	235.85				72.29	950.0	1080.0	1190.0	47.75		
RS48B-1	76.20 (3")	48.26	45.72	29.23	49.30	58.80	117.70	12.10	10.00	63.80	-	560.0	565.0	618.0	25.00		
RS48B-2					95.00	104.40	209.00				91.21	1000.0	1000.0	1150.0	50.00		
RS48B-3					140.60	150.00	300.20				91.21	1500.0	1520.0	1750.0	75.00		

Note:

1. Connecting links are clip type for sizes up to RS16B, and cotter type for sizes RS20B to RS48B.
2. RF06B chain has flat-shaped link plates.
3. Intermediate plate of multi strand RF06B-2 and RS08B-2 chain is a solid plate.
4. Center sink riveting is applied to RS08B-1 to RS16B-1 single strand chain.
5. Double stake riveting is applied to all other sizes including multi-strand chain.
6. When a single pitch offset link is used, please calculate a 35% reduction of the fatigue strength.
7. RS24B-H-1 chain is a reinforced RS24B-1 chain.

ANSI G7 STANDARD ROLLER CHAIN



ANSI G7

Dimensions in mm

TSUBAKI Chain No.	Pitch p	Roller Diameter d1	Inner Width b1	Pin			Link Plate			Transverse Pitch pt	Min. Tensile Strength acc. to ANSI kN	Min. Tensile Strength acc. to Tsubaki kN	Approx. Mass kg/m
				Diameter d2	Length L1	Length L2	Length L	Thickness T	Height H (max)				
RS25-1	6.35 (1/4")	3.30	3.18	2.31	3.80	4.50	-	0.74	5.84	-	3.6	4.1	0.14
RS25-2					6.95	7.75	-			6.40	7.2	8.2	0.27
RS25-3					10.15	10.95	-			6.40	10.8	12.4	0.42
RS35-1	9.525 (3/8")	5.08	4.78	3.59	5.85	6.85	13.50	1.25	9.00	-	8.7	9.8	0.33
RS35-2					10.90	11.90	24.50			10.10	17.4	19.6	0.69
RS35-3					16.00	16.90	34.60			10.10	26.1	29.4	1.05
RS35-4	12.70 (1/2")	7.80	7.80	3.63	21.05	21.95	44.70	1.00	9.80	10.10	-	39.2	1.41
RS37-1					5.10	5.90	12.45			-	-	8.1	0.29
RS38-1					6.00	7.10	14.10			1.10	9.80	-	8.1
RS41-1	12.70 (1/2")	7.77	6.38	3.59	6.75	7.95	15.10	1.25	9.80	-	7.4	10.3	0.41
RS40-1	12.70 (1/2")	7.92	7.95	3.97	8.25	9.95	17.90	1.50	12.00	-	15.2	17.7	0.64
RS40-2					15.45	17.15	33.50			14.40	30.4	35.3	1.27
RS40-3					22.65	24.15	47.90			14.40	45.6	53.0	1.90
RS40-4					29.90	31.30	62.30			14.40	-	70.6	2.53
RS50-1	15.875 (5/8")	10.16	9.53	5.09	10.30	11.90	22.50	2.00	15.00	-	24.0	28.4	1.04
RS50-2					19.35	21.15	41.80			18.10	48.0	56.9	2.07
RS50-3					28.40	30.20	59.90			18.10	72.0	85.3	3.09
RS50-4					37.45	39.25	78.10			18.10	-	114.0	4.11
RS60-1	19.05 (3/4")	11.91	12.70	5.96	12.85	14.75	28.20	2.40	18.10	-	34.2	40.2	1.53
RS60-2					24.25	26.25	52.60			22.80	68.4	80.4	3.04
RS60-3					35.65	38.15	75.50			22.80	102.6	121.0	4.54
RS60-4					47.05	49.55	98.30			22.80	-	161.0	6.04
RS80-1	25.40 (1")	15.88	15.88	7.94	16.25	19.25	36.60	3.20	24.10	-	61.2	71.6	2.66
RS80-2					30.90	33.90	67.50			29.30	122.4	143.0	5.27
RS80-3					45.60	48.50	96.90			29.30	183.6	215.0	7.89
RS80-4					60.25	63.25	126.30			29.30	-	286.0	10.50
RS100-1	31.75 (1 1/4")	19.05	19.05	9.54	19.75	22.85	43.70	4.00	30.10	-	95.4	107.0	3.99
RS100-2					37.70	40.80	81.50			35.80	190.8	214.0	7.85
RS100-3					55.65	58.75	117.30			35.80	286.2	321.0	11.77
RS100-4					73.55	76.65	153.10			35.80	-	428.0	15.70
RS120-1	38.10 (1 1/2")	22.23	25.40	11.11	24.90	28.90	55.00	4.80	36.20	-	137.1	148.0	5.93
RS120-2					47.60	51.60	103.20			45.40	274.2	296.0	11.70
RS120-3					70.40	74.40	148.60			45.40	411.3	444.0	17.53
RS120-4					93.10	97.10	194.00			45.40	-	592.0	23.36
RS140-1	44.45 (1 3/4")	25.40	25.40	12.71	26.90	31.70	59.50	5.60	42.20	-	185.9	193.0	7.49
RS140-2					51.35	56.15	112.30			48.90	371.8	386.0	14.83
RS140-3					75.85	80.75	161.30			48.90	557.7	580.0	22.20
RS160-1					81.85	86.65	170.20			-	244.6	255.0	10.10
RS160-2	50.80 (2")	28.58	31.75	14.29	61.15	66.15	132.20	6.40	48.20	58.50	489.2	510.0	20.04
RS160-3					90.45	95.45	190.70			58.50	733.8	765.0	30.02
RS180-1					35.65	42.45	80.60			-	308.2	336.0	13.45
RS180-2	57.15 (2 1/4")	35.71	35.72	17.46	68.75	75.35	151.10	7.15	54.20	65.80	616.4	673.0	26.52
RS180-3					101.70	108.50	216.90			65.80	924.6	1010.0	38.22
RS200-1					39.00	44.80	87.30			-	381.7	427.0	16.49
RS200-2	63.50 (2 1/2")	39.68	38.10	19.85	74.85	80.65	161.20	8.00	60.30	71.60	763.4	853.0	32.63
RS200-3					110.75	116.45	233.00			71.60	1145.1	1280.0	49.02
RS240-1					47.90	55.50	106.70			-	550.4	623.0	24.50
RS240-2	76.20 (3")	47.63	47.63	23.81	91.90	99.40	198.40	9.50	72.40	87.80	1100.8	1250.0	48.10

Note:

1. RS25 - RS35 are rollerless chain (only bush). The figure shown is the bush diameter.
2. Connecting links are clip type for sizes up to RS60, and cotter type for sizes RS80 to RS200. RS240 connecting links are spring pin type.
3. When a single pitch offset link is used, please calculate a 35% reduction of the fatigue strength.